



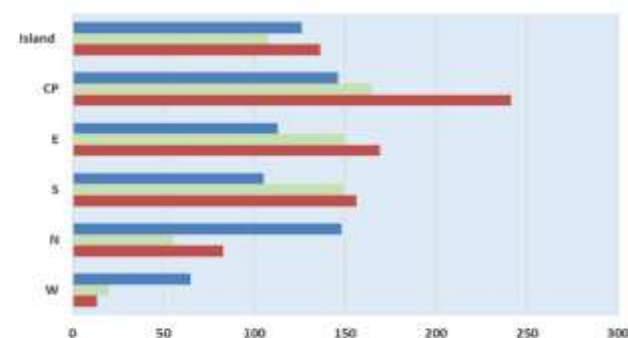
MAURITIUS METEOROLOGICAL SERVICES

Mean Rainfall for 1-31 August 2025 updated on 4 September 2025

Mauritius

August 2025 turned out to be the eighth wettest August since the last 30 years with 136 mm of rainfall, representing 126% of the long-term mean.

The Central Plateau recorded the highest rainfall amount and percentage quantifying to 136 mm and 165% respectively.



	W	N	S	E	CP	Island
Percentage (%) of Long Term Mean for August 2025	65	148	105	113	146	126
LONG TERM MEAN for August	20	56	149	150	165	108
Actual Mean Rainfall (mm) August 2025	13	83	156	169	241	136

Outer Islands

		Amount (mm)		
Stations		Actual Rainfall	LTM Rainfall	% of LTM
Rodrigues	Pointe Canon	74	62	119
	Plaine Corail	73	50	146
	Citronelle	90	111	81
Agalega		45	62	72
St Brandon*		-	-	-

- Over Rodrigues, above normal rainfall was recorded over Plaine Canon and Plaine Corail whereas slightly below normal rainfall was observed over Citronelle
- Below normal rainfall was recorded over Agalega.

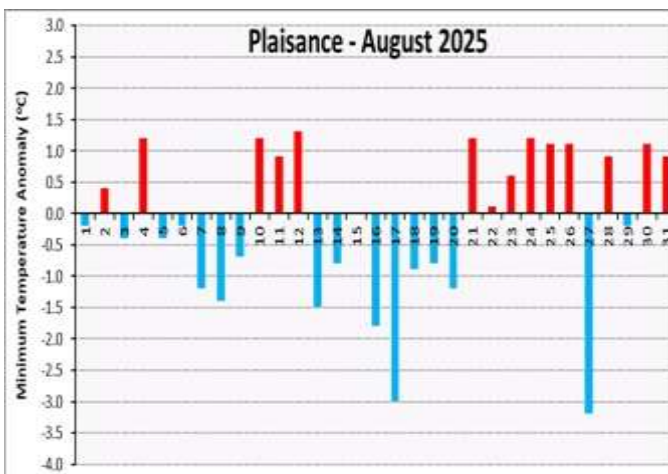
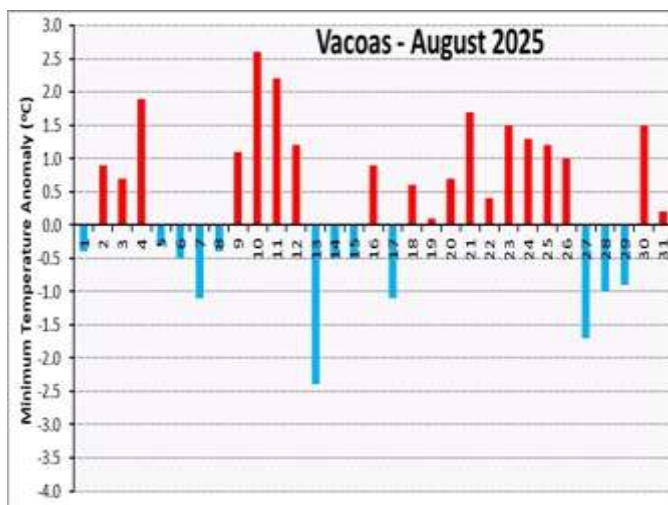
* The St. Brandon Meteorological Station is currently closed



MAURITIUS METEOROLOGICAL SERVICES

Temperature for August 2025

Minimum Temperature



Temperature

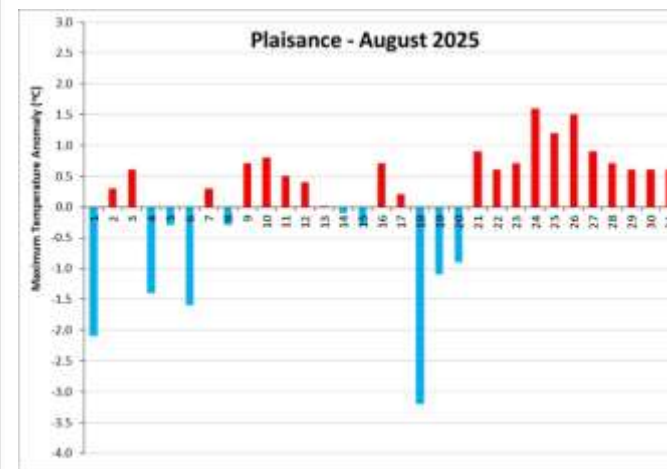
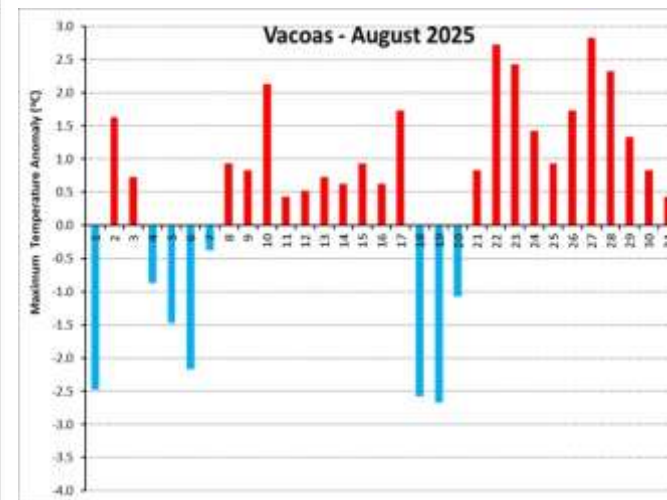
Minimum temperature was on average 0.4 °C warmer than the normal at Vacoas and -0.1 °C cooler than the normal at Plaisance.

Maximum temperature was on average 0.5 °C and 0.1 °C warmer than the normal at Vacoas and Plaisance respectively.

The highest and lowest minimum and maximum temperatures recorded at Vacoas and Plaisance were:

Vacoas		
	Min	Max
Highest	18.5 °C (10 Aug)	25.0 °C (27 Aug)
Lowest	13.5 °C (13 Aug)	19.5 °C (19 Aug)
Plaisance		
	Min	Max
Highest	20.1 °C (12 Aug)	26.3 °C (24 Aug)
Lowest	14.2 °C (27 Aug)	21.5 °C (18 Aug)

Maximum Temperature





PROBABILITY:

- ABOVE NORMAL
- NEAR NORMAL or no signal
- BELOW NORMAL

SON 2025

Regions and Probabilities (Above Normal / Near Normal / Below Normal):

- Pamplona:** 0.59 / 96 / 0.4
- Madrid:** 0.27 / 26 / 74
- Valladolid:** 0.63 / 100 / 0.0
- Barcelona:** 0.83 / 100 / 0.0
- Valencia:** 0.54 / 100 / 0.0
- Extremadura:** 0.3 / 82 / 0.18
- Castilla-La Mancha:** 0.8 / 100 / 0.0

Statistical Model Forecast of (a) rainfall and (b) temperature for SON-2025

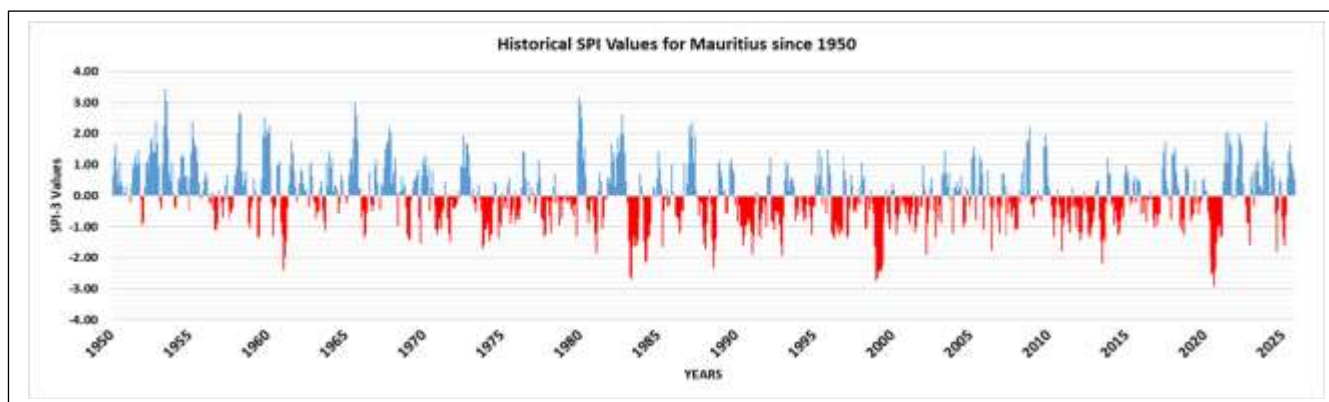


MAURITIUS METEOROLOGICAL SERVICES

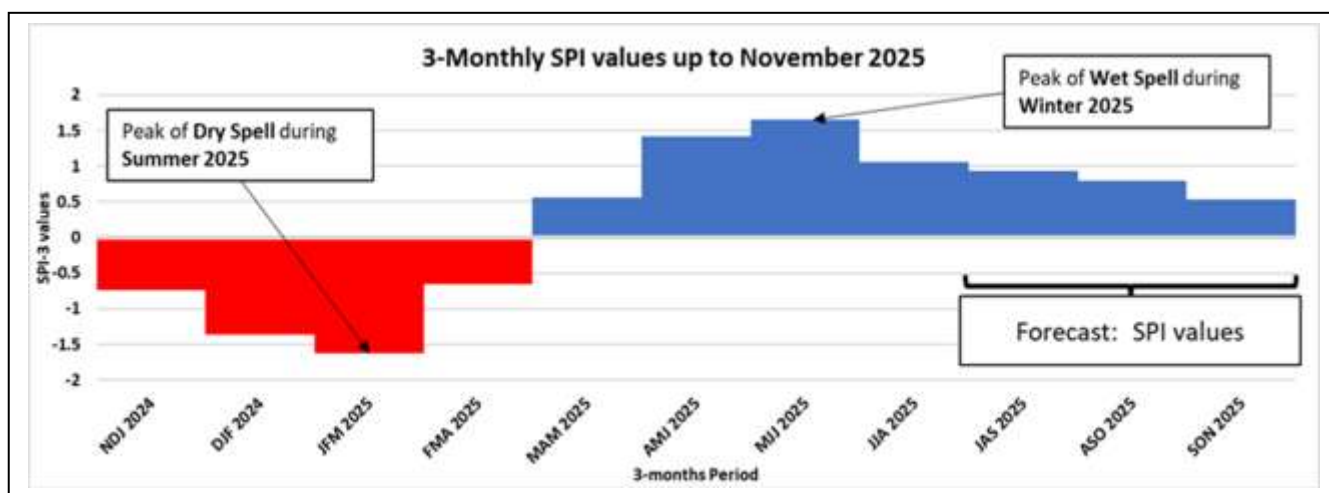
Standardized Precipitation Index (SPI) Monitoring in Mauritius

Aim: To apply the SPI, as approved by the World Meteorological Organisation, in Mauritius to monitor rainfall deficits during dry spell events.

Current Status: **Moderately wet** conditions were observed in **JJA-25** with an SPI value of **+1.06** as shown in Fig (b). Forecast SPI values for **JAS-25**, **ASO-25** and **SON-25** indicate **near normal conditions** with values in the positive range as follows: **+0.94**, **+0.80** and **+0.53** respectively.



(a) Historical SPI-3 values since 1950



(b) Current SPI-3 value, Status & Forecast

Observed SPI Status 2024/2025		
Period	SPI-3 Value	Category
NDJ-24	-0.66	Weakly Dry
DJF-24	-1.36	Moderately Dry
JFM-25	-1.63	Severely Dry
FMA-25	-0.65	Weakly Dry
MAM-25	+0.56	Near Normal
AMJ-25	+1.42	Moderately Wet
MJJ-25	+1.66	Moderately Wet
JJA-25	+1.06	Moderately Wet
Forecast SPI based on Monthly RR Data		
JAS-25	+0.94	Near Normal
ASO-25	+0.80	Near Normal
SON-25	+0.53	Near Normal

Legend		
WMO SPI Dry/Wet Classifications		
Level	SPI Values	Category
1	+2.0 and above	Extremely Wet
2	+1.5 to +1.99	Very Wet
3	+1.0 to +1.49	Moderately Wet
4	-0.99 to +0.99	Near Normal
5	-1.0 to -1.49	Moderately Dry
6	-1.5 to -1.99	Severely Dry
7	-2.0 and less	Extremely Dry

The right of publication in print, electronic and any other form is reserved by the Meteorological Services. Any part of this document may be reproduced provided complete source is acknowledged or after authorization from:

Acting Director, Meteorological Services,
St Paul Road, Vacoas.

Tel: 6515100, Fax: 6861033

Email: meteo@intnet.mu

Updated on: 4 September 2025